

**Organising committee:**

Dr Monique Aubart Schuller, Frisange, Luxembourg  
Dr Françoise Auger, Paris, France  
Dr Jean-Daniel Gradeler, St Privat la Montagne, France  
Dr Mathieu Moreno, Bousse, France  
Dr Kevin Prohaska, Hosingen, Luxembourg

The SMB (French Balint Society) will be holding a Balint WE in Reims from the 25th to 27th of May 2018. The work will begin on Friday afternoon by a short talk and a Balint group and will end on Sunday at noon. The IBF council will take place on Saturday afternoon.

Reims is in the area of the worldwide famous Champagne wine! It's an historical city where many French kings were crowned. <http://www.reims-tourism.com>

The conference will be held at the International Center in Reims, which is a place with the same philosophy as to the one where the 19th international congress took place in Metz. website: <http://www.cis-reims.co.uk>

The conference center is near the center of the city and easily connected to the city buses. Rooms can be booked in the conference center. Different types of room are available. You need to book the room yourself directly on the website (<http://www.cis-reims.co.uk/hebergement-2/nos-chambres/>).

Best to say that you come for the Balint weekend as we manage to get single rooms with toilets and shower inside the room for 53,50€/ person/ night breakfast included.

You can also find hotels using the website [reims-tourism.com](http://www.reims-tourism.com)





### By train

Reims is located at the junction of the Lille - Dijon - Mediterranean and Paris - Charleville – Sedan lines. 12 daily links between Reims-Paris.

The TGV high-speed train links Reims to **Paris (gare de l'Est)** in 45 mins.

There are 2 train stations that can bring you to Reims : « Gare Reims-Centre », located in the heart of the city, and « Champagne-Ardenne TGV », in Bezannes, which is linked to Reims thanks to the tram. (20 min)

From **London**: At the best, the train takes 5hrs from London St Pancras to Champagne Ardennes TGV.

**Luxembourg** station is 2hr 30 min far from Champagne Ardennes TGV.

**Bruxelles** is 2hrs 12 min far from Champagne Ardennes TGV

### By plane

#### **Paris-Roissy international airport**

Reims is located 30 minutes\* from the Paris Roissy international airport.

Paris airports website: <http://www.adp.fr>

\*By train (TGV): Paris-Roissy airport to Champagne-Ardenne TGV

From **Paris-Orly** you have to take the Orlyval or a taxi to reach a train station called « Paris Gare de l'Est ». The TGV trip from « Paris Gare de l'Est » to « Reims Gare » takes 46 min.

**Bruxelles** and **Luxembourg** airports are also easily reachable.

### By car

Reims is located at the crossroads of the A4-E50 (Paris - Strasbourg) and A26-E17 (Calais - Troyes - Dijon) motorways. The city has 6 motorway exits.

## By bus

Isilines

Come to Reims from different cities such as Lille, Strasbourg, Metz, Nancy, Paris with Isilines : great comfort buses with free wi-fi, air conditioning and toilets on board.

Booking by phone or on [WWW.ISILINES.FR](http://WWW.ISILINES.FR) [WWW.EUROLINES.FR](http://WWW.EUROLINES.FR)

Tel: +33892 89 12 00 (€0.35/min)

Eurolines

<http://www.eurolines.fr>

Ouibus

[www.ouibus.com](http://www.ouibus.com)

There may be some other companies.

On the Saturday night we have arranged a Champagne vineyard visit, followed by a Champagne tasting and Dinner. You can find some information on <https://hotte-schmit.fr>



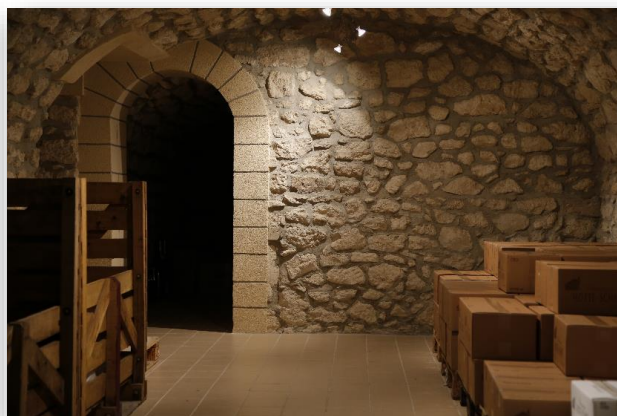
## LA MAISON

---



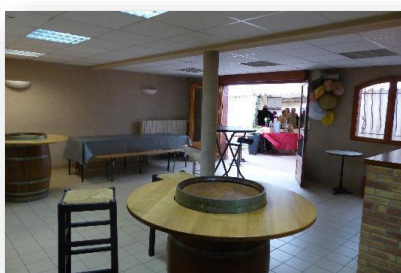
# LES CAVES

---



# NOS SALLES DE RECEPTION

---



# LE VIGNOBLE: LES MOMENTS CLES

---

LE DEBOUREMENT



L'ÉBOURGEONNAGE



# LE VIGNOBLE: LES MOMENTS CLES

---

LES VENDANGES

